



AUTOMATE YOUR LIFE WITH THE POWER OF A.I

One APP to rule it all





ABOUT US

At LEAP, we believe that the power of artificial intelligence has the potential to transform the way we live, work and play. We believe that by allowing people to seamlessly control appliances with the touch of a button, we can make everyday living more convenient, efficient, and enjoyable.

OUR MISSION

We are committed to delivering innovative and high-quality products that improve the lives of our customers. We continuously strive to deliver the latest technology and design to create products that are efficient, reliable and user-friendly.

OUR SMART SOLUTIONS



Our smart solutions and installations are designed to be **highly versatile** and can be used in a wide range of settings, including **residential homes, offices, retail spaces** and **healthcare facilities**. We are proud to offer products can be easily integrated with existing smart systems, making it simple for our customers to upgrade their living spaces.

OUR SMART SOLUTIONS



Areas of Application (Include but not limited to the following) :

- Hotels, Airbnbs, Resorts etc.
- Hospitals, Nursing homes, Elderly care homes etc.
- Residential homes, Dormitories etc.
- Factories, Retail shops, Offices, Gyms etc.

WHAT IS A SMART FACILITY?

IoT Hardware + Software Interconnectivity

Seamless interaction between smart devices and software allows for a smoother experience for guests and staff alike.

Centralized Management

Centrally control your smart facility and all included devices from your own branded platform, enabling preemptive maintenance and a stress free experience for guests.

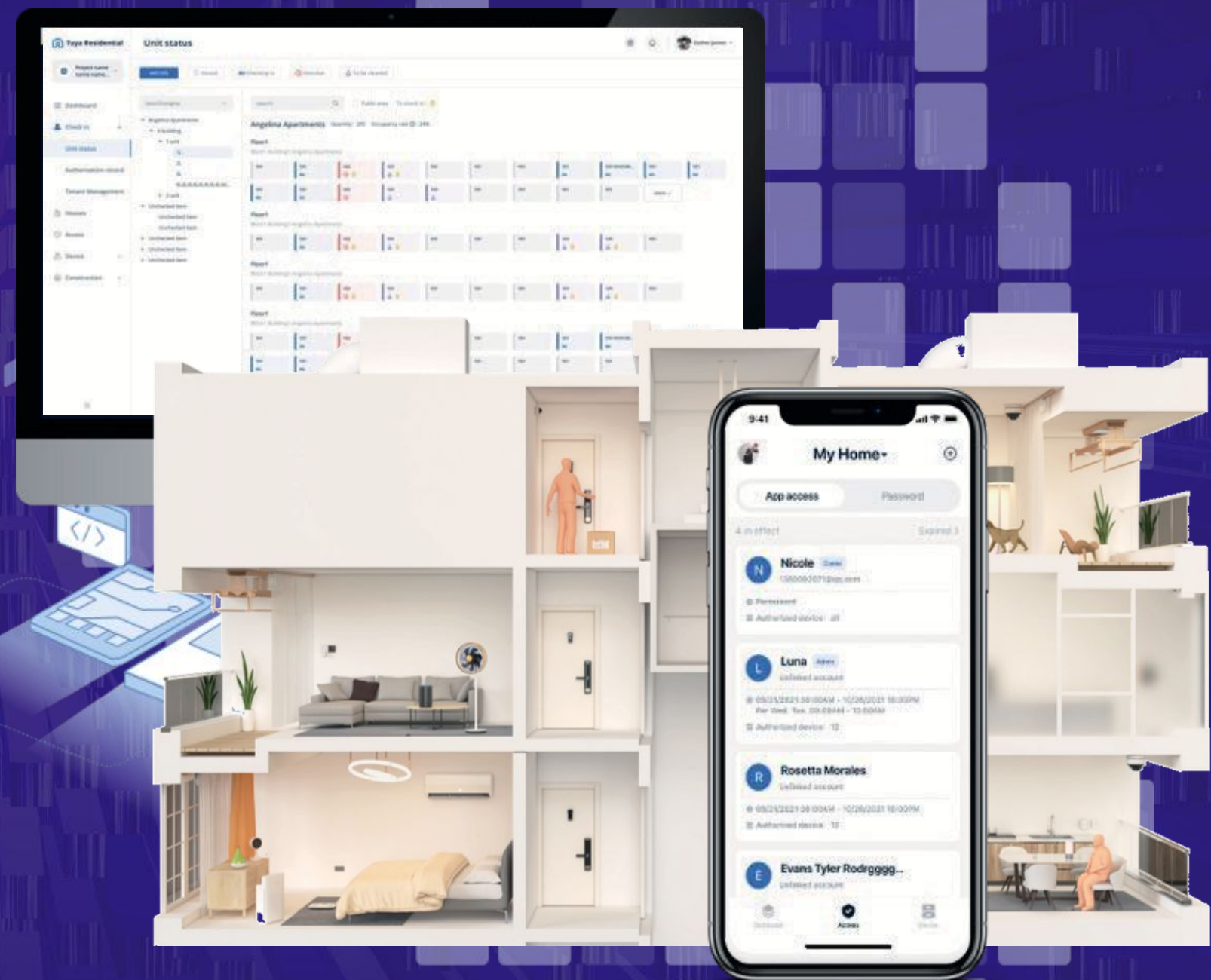
Heightened Guest Experience

Using the LEAP application, guests can achieve contactless check in and full interactivity with their smart rooms and processes

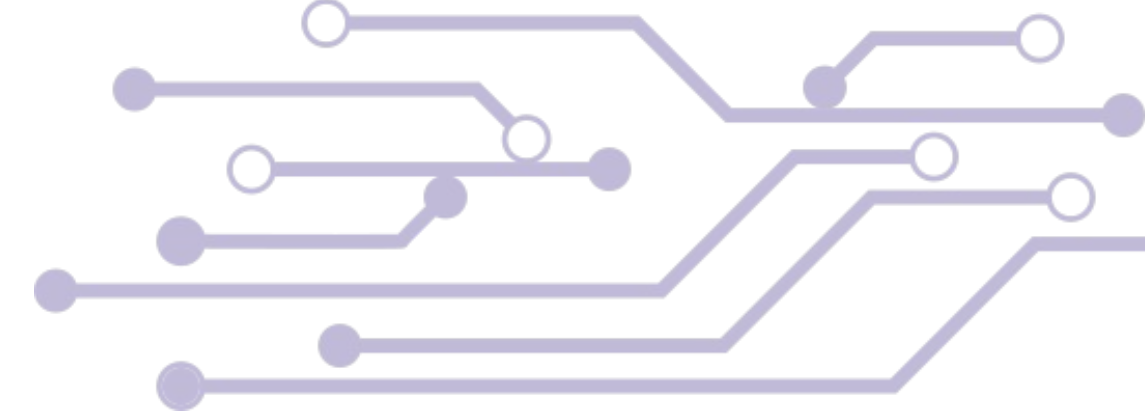
Energy Efficiency

Smart meter readings for closer control over energy expenditure, energy saving automation to take human error out of the equation, devices highlighting necessary maintenance before it's too late.

LEAP PLATFORM SYSTEMS



LEAP PLATFORM SYSTEMS

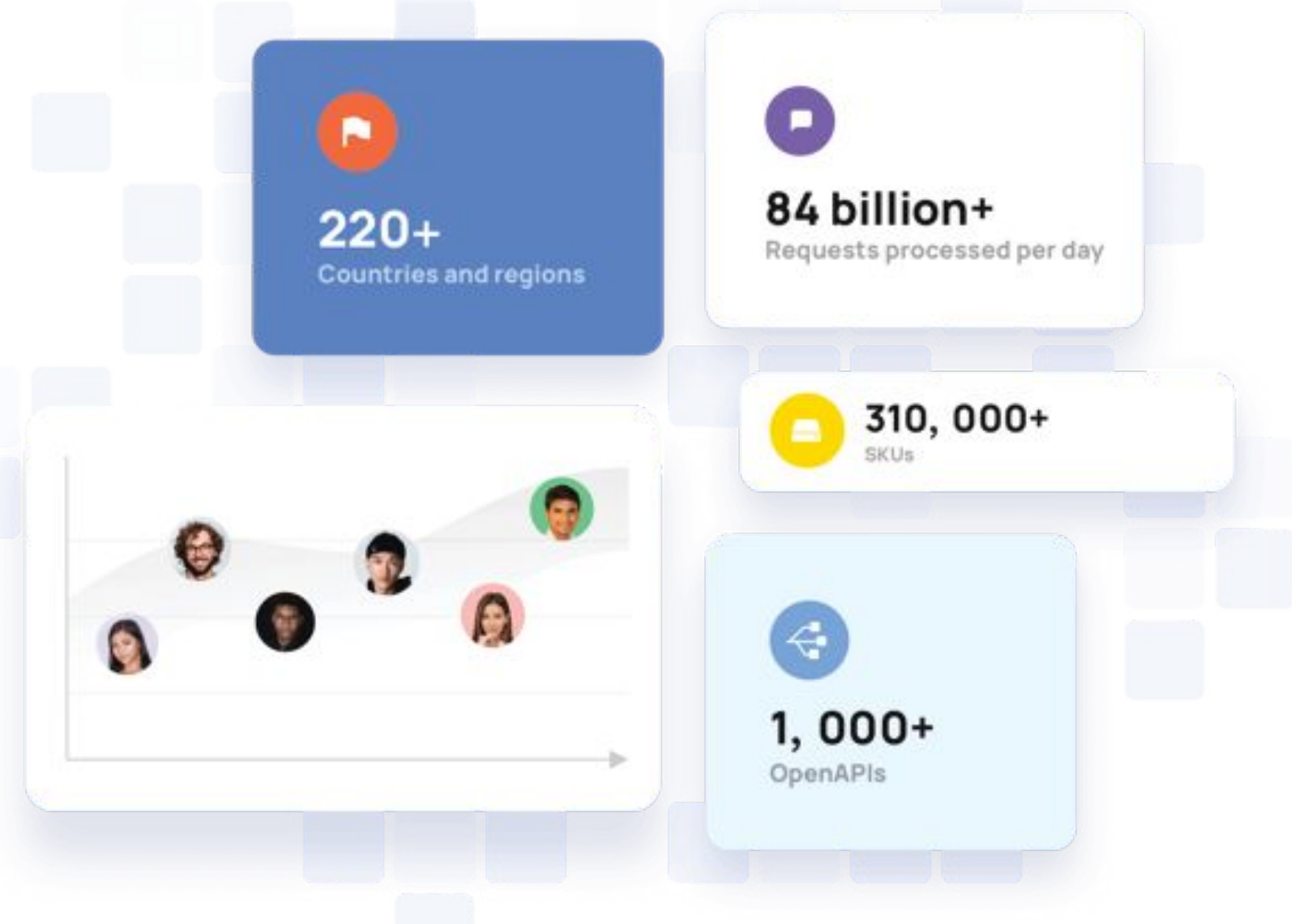


Want to build IoT into your existing software platform?

Our team of developers will **work with you** to incorporate IoT into your business, without having to open a separate software platform

Extensive API list to combine with hardware management and build your IoT platform

Possibilities **go beyond residential** properties, PaaS can be applied in scenarios such as:
Schools, Casinos, Offices, and Retail Stores





WHY LEAP'S SMART SYSTEM?

Convenience

Our smart solution is designed to make life easier:

The automatic intercommunication among devices simplifies daily routines and allows users to be in control wherever they are.

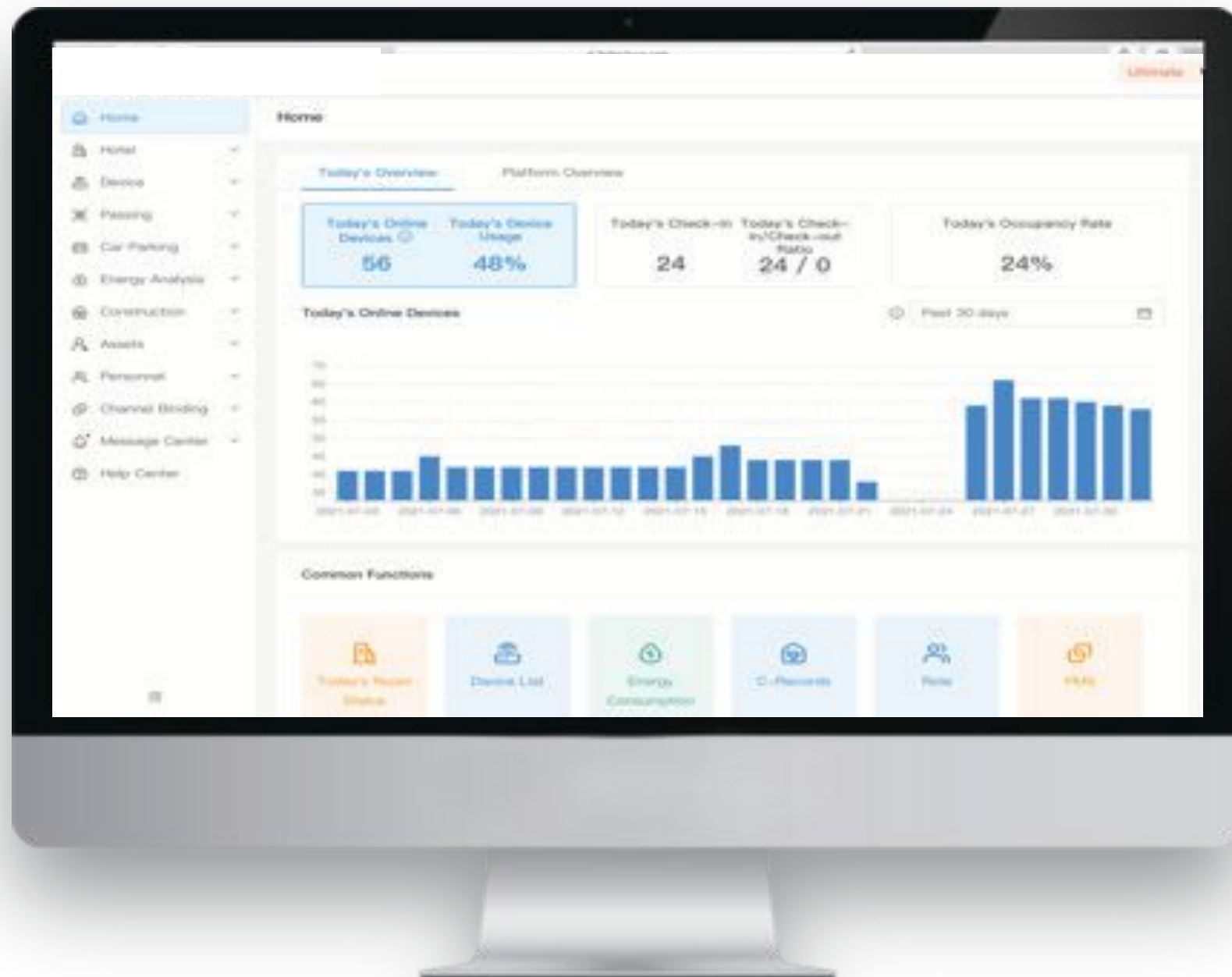
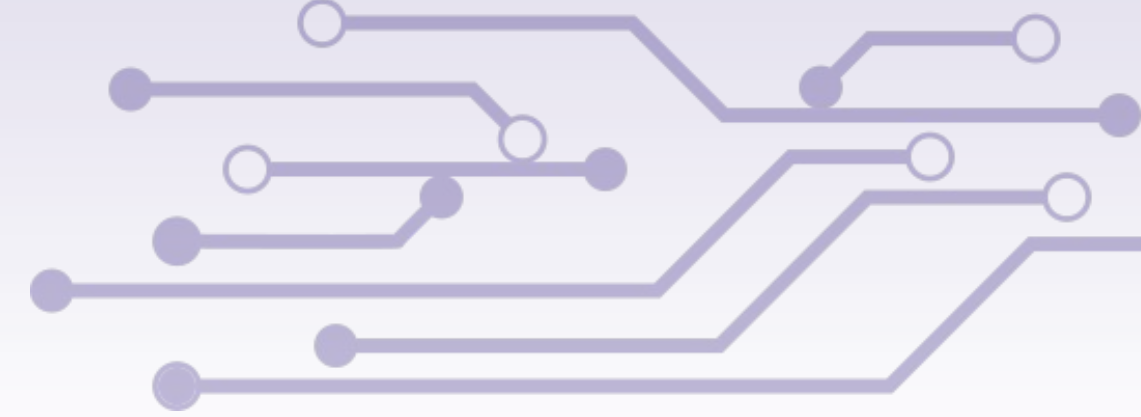
Security

Our wide range of smart security devices are ready to secure and protect facilities. They can detect motion, smoke and water leakage etc, and receive alerts in case of emergencies.

Energy-saving

There will be no more wasting electricity with LEAP's solutions. Our smart solution helps save valuable energy by smartly linking appliances.

PLATFORM FEATURES



Facility Management

Manage all rooms in the facility as well as the status of all included devices

Device Management

Centrally manage and control all devices within both the rooms and common areas

Access Control

Contactless Check-In as well as permissions control for all staff

Room Reservation System Binding

Bind LEAP Office to your chosen Room Reservation System to seamlessly manage your smart facility

Energy Analysis

Track and manage the energy output of all rooms and devices in the property

Maintenance Management

Enable staff to install devices and temporarily access the room using the maintenance app

Asset Management

Manage the number of room and device licenses you have available

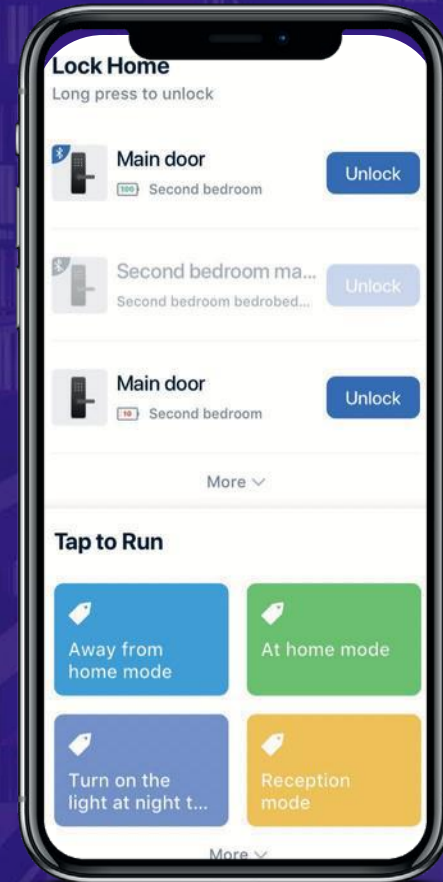
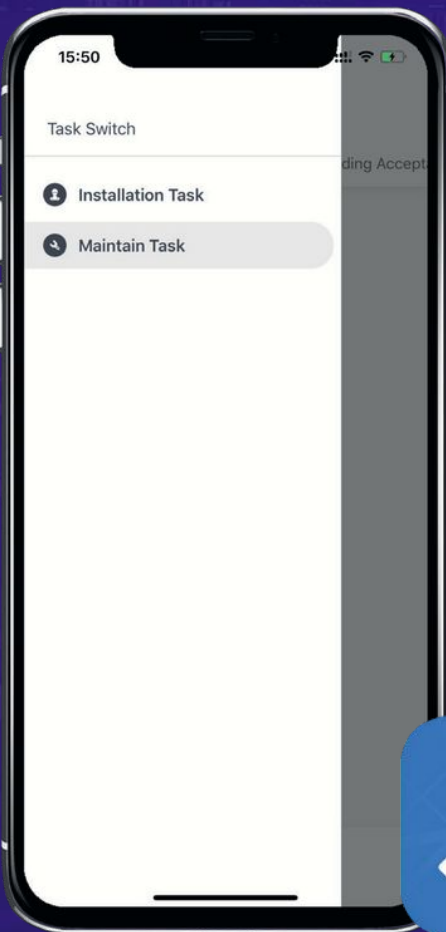
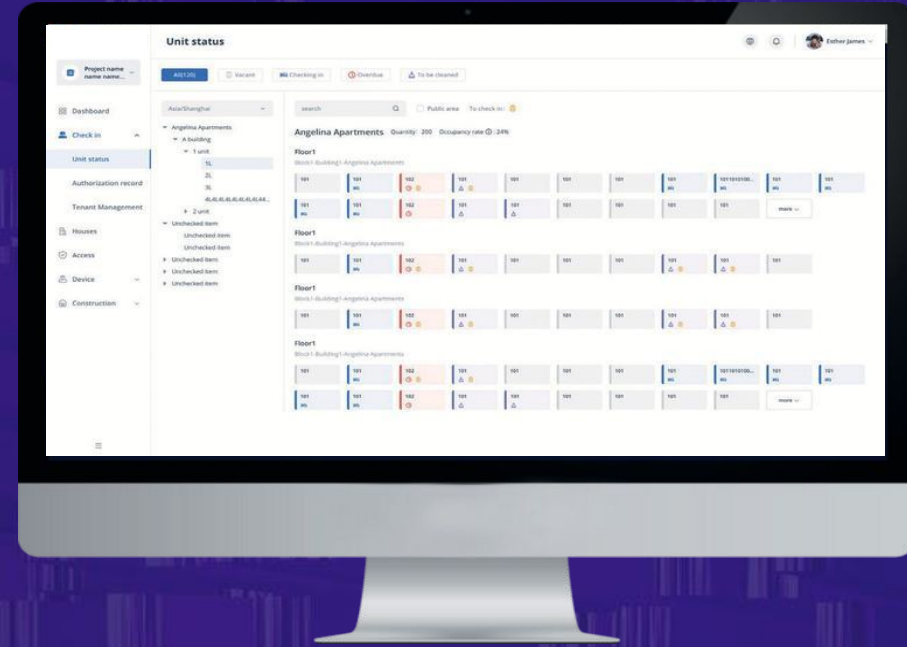
Personnel Management

Give appropriate permissions to different staff members

Message Center

Stay informed with live updates from every area of your facility

SOFTWARE FEATURES



Smart Platform

For **facility managers** to centrally control all apartments, devices, and staff

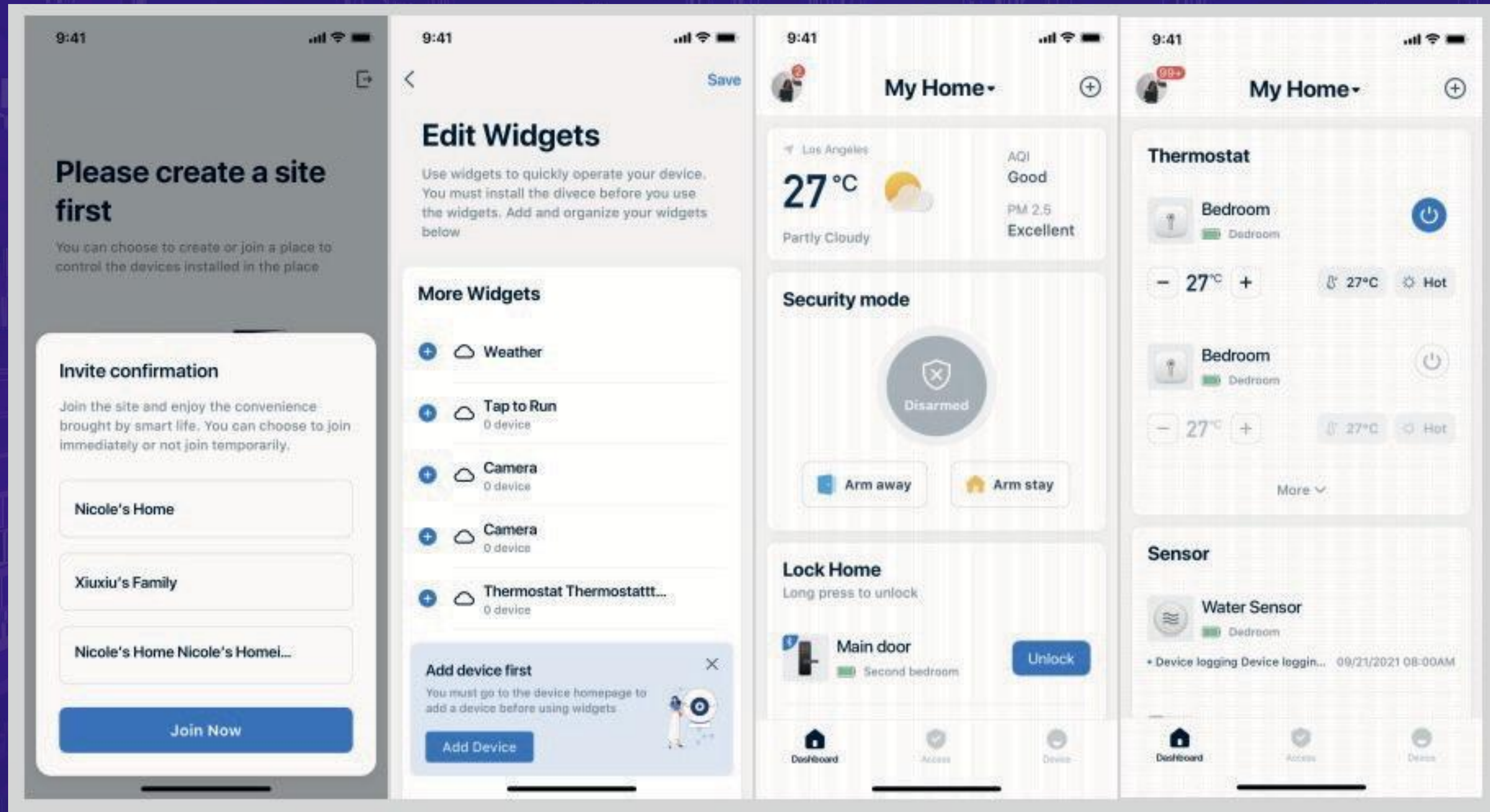
Smart Apps

For **guests/residents** to manage and interact with their smart apartment

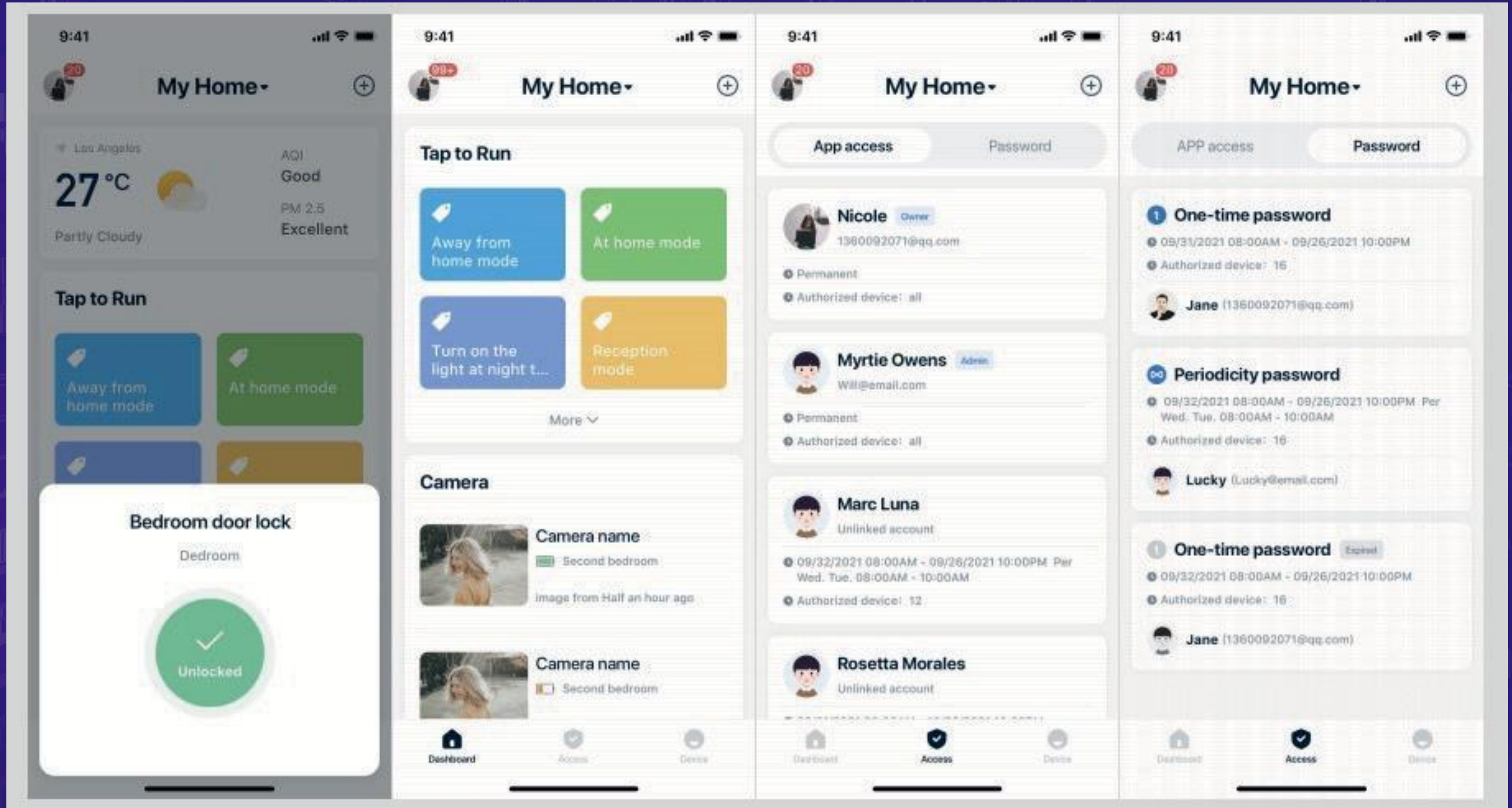
Maintenance Apps

Enables creation and completion of smart work orders for construction and **maintenance staff**

SOFTWARE FEATURES



SOFTWARE FEATURES



Access Control

Contactless Check-In

- Allow guests to access and move around the property *without the help of staff*
- *Multiple access solutions* such as RFID cards, access password and app to enter their unit
- Codes can be *automatically sent* via text, email or app
- Codes set for *limited time period*
- Multiple access solutions available for *public areas and rooms*

The screenshot displays a web-based interface for managing access control. The main section is titled "Authorization" and shows a navigation menu on the left with options like Dashboard, Check in, Authorization, Record, User, Houses, Access, Device, and Construction. The main content area is divided into several sections: a top navigation bar with filters for "All(120)", "Vacant(21)", "Checking in(10)", "Overdue(4)", and "To be cleaned(17)"; a search bar; a list of units for "Angelina Apartments" (1L, 2L, 3L, 4L4L4L4L4L4L4L4L4...); a "Floor1" view showing a grid of unit status indicators (e.g., 101, 102); and a "Detail" view for unit 101. The detail view includes a "Checking in" button, a "Valid period" of 05/05/2022 12:00PM~04/05/2022 12:00PM, an "Authorization number" of 202106030001, a resident name "Nicole Main" with email "xiaoxiannvxx@gmail.com", and a "Confirm check-in" button. A warning message states: "Please confirm check-in before 23:59:59, otherwise it will be cancelled".

Unit Management Property Manager



- Supports multiple building types such as apartments, single-family houses, multi-family houses, etc.
- Public areas and units support different access control and device control
- Manage devices and create automations for greener and more comfortable common areas

The screenshot displays the 'Houses' management interface. On the left is a sidebar with navigation options: Project name, Dashboard, Check in, House (selected), Access, Device, and Construction. The main content area is titled 'Houses' and includes a 'Structure' tree on the left showing a hierarchy: Garden District > A building > 1 unit > 1L (selected). Below this are options for '2 unit' and several 'Unchecked item' entries. On the right, there are buttons for '+ Add Unit' and 'Batch add Unit', a search bar, and a table of units. The table has columns for Account, Type, Devices, Creation time, and Operation. Below the table is a pagination control showing 'Total 50 items' and a page number '2' selected out of 10 pages.

Account	Type	Devices	Creation time	Operation
+ A-1L-1unit-Abuilding-Garden District	Room	89	12/12/2021 09:23:23 AM	Edit Delete
B-1L-1unit-Abuilding-Garden District	Room	0	12/12/2021 09:23:23 AM	Edit Delete
C-1L-1unit-Abuilding-Garden District	Room	450	12/12/2021 09:23:23 AM	Edit Delete
D-1L-1unit-Abuilding-Garden District	Room	450	12/12/2021 09:23:23 AM	Edit Delete



Leap Home

LEAP HOME

Live smarter as a family.



COMPLETE SMART LINKAGE:
Control the entire home on one single app!



Case Study - Apartments

Providing short and long rental for one-room apartment to multi-story villas and single or family units.

LEAP Home App

Leap's Smart Home Solution allows for tenants and owners of the same unit to control access and devices via the app.

LEAP Home Backend Management Platform

Facility managers will also be able to easily manage the entire apartment via the platform.



Leap Hotel

LEAP HOTEL

*Improving management, efficiency and control
while offering a better service to guests.*

LEAP HOTEL SOFTWARE SERVICE

LEAP Hotel SaaS

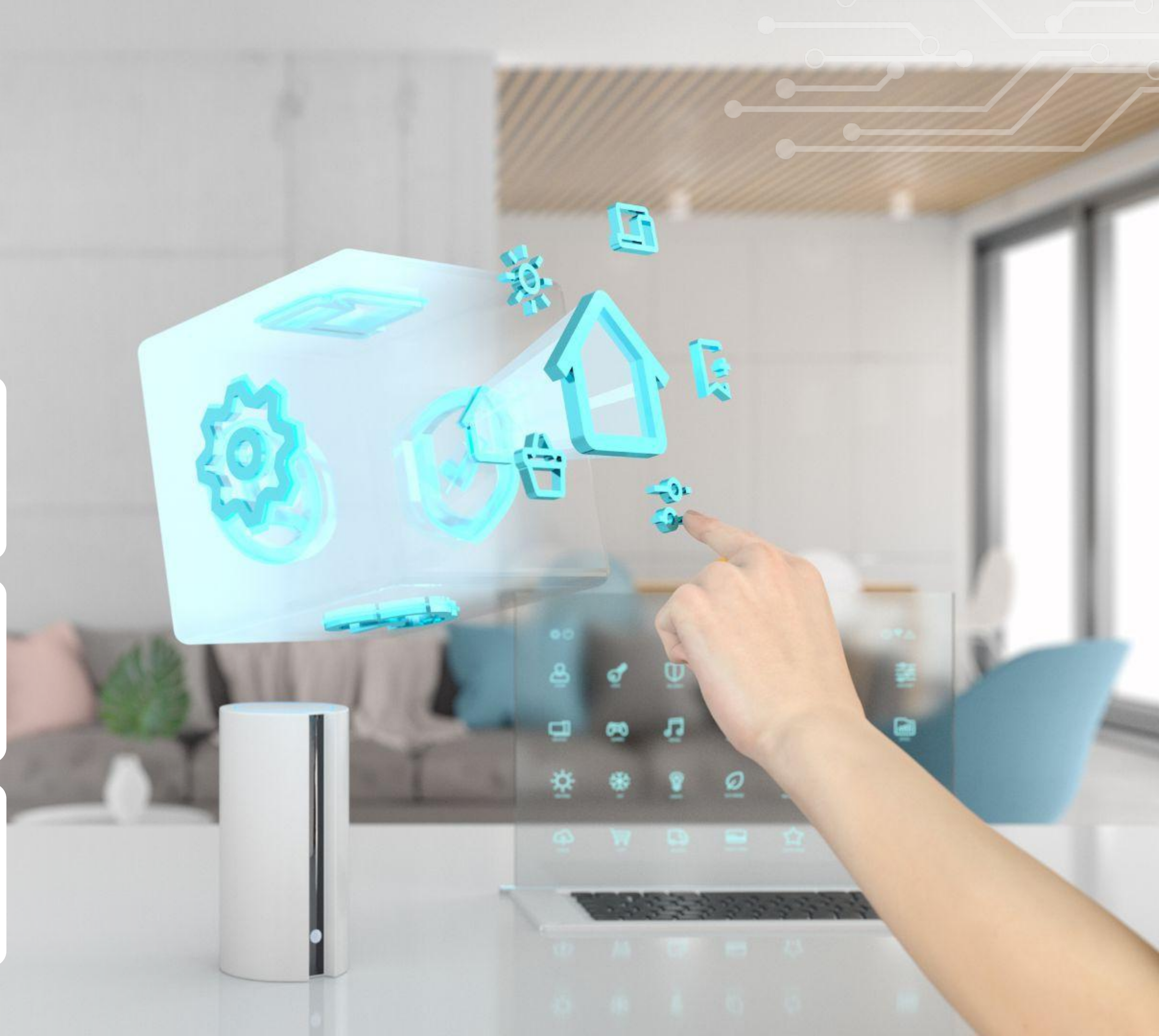
For [hotel managers](#) to centrally control all rooms, devices, and staff

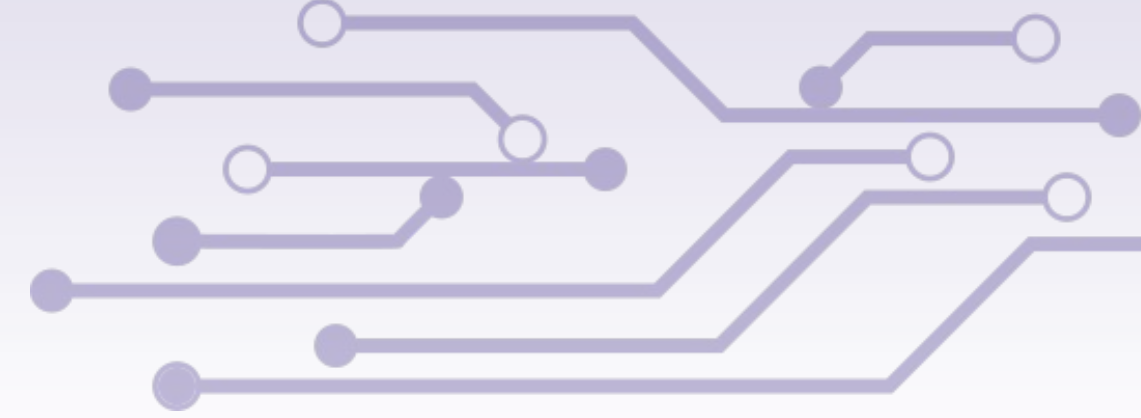
Web App

For [guest](#) to manage and interact with their smart hotel

Maintenance App

Enables creation and completion of smart work orders for [construction and maintenance staff](#)





Case Study - Hotels/AirBNB

LEAP Hotel App

- Guests can use the LEAP app to access the hotel and their rooms
- Guests control in-room devices such as lights and curtains using the web app

LEAP Hotel Backend Management Platform

- Manage room status to see who is in which room and any room service requests they may have
- PMS synchronization allows all guest information to be integrated from your existing PMS platform for comprehensive room management
- Manage device status to ensure all devices are online and fully functioning
- Common area management – manage devices and create automations for more energy-efficient and comfortable common areas
- Check In/Out for all guests, giving them smart lock access through facial recognition, key code, or app



AI Powered
Virtual Caregiver
No one should be left alone.

LEAP CARE

Smart Elderly Care System



Behavior Detection

1

Sensors are used to detect elderly's conditions and behavioral data such as sitting time, lying time, and activity patterns.

MICROMOTION SENSORS, MICROWAVE SENSORS, LUX SENSORS, CONTACT SENSORS, TEMPERATURE AND HUMIDITY SENSORS.

Battery-level Monitoring

2

The battery level monitoring module monitors the devices. If low battery is detected, attention be given to check on elderly people.

SMART DISTRIBUTION BOARDS
Power control modules.

Security/Safety

3

Alerts are triggered if smart sensors detect abnormal conditions such as gas leakages, water leakages, electrical leakages, fires, falls, or unclosed doors or windows.

RADARS SMOKE DETECTORS AND GAS DETECTORS WATER DETECTORS.

Health Management

4

Elderly people's daily health data is collected to create historical health reports and remind elderly people to take medicine if necessary.

SMART HEALTH DEVICES THAT CAN INTEGRATE WITH VARIOUS HEALTH SIGN MONITORING DEVICES.

Emergency Support

5

Elderly tenants can press the emergency buttons to report emergencies or fall detection sensor showing emergency and get immediate attention.

WRIST-WORN TRACKERS WITH THE EMERGENCY REPORTING FUNCTION SMART EMERGENCY BUTTONS FALL DETECTOR

Family Care

6

Elderly do not need to worry about how to start a video chat because their family members can remotely start the video chat by using smart devices.

SMART HEALTH DEVICES THAT CAN INTEGRATE WITH VARIOUS HEALTH SIGN MONITORING DEVICES.



Case Study - Hospitals/Nursing Homes

LEAP Care App

Through the mobile phone, the patient or caregiver can control devices remotely and receive alerts.

LEAP Care Backend Management Platform

- The intelligent monitoring platform for the caregiver to actively monitor the patients through smart sensors and other linkage devices. Alerts will be automatically sent to the platform to inform the operator or nurse station of possible distress or fall detection.
- Artificial intelligence algorithm helps to monitor patients without human intervention, thus eradicating human errors due to fatigue.
- The platform can also alert if any smart device is not working or low in battery. Maintenance team can be activated using the platform to perform any maintenance or installation work.



LEAP OFFICE

Work Better,
Smarter and Faster



Case Study - Offices/Commercial spaces

LEAP Office App

Through their mobile phones, employees can control devices in the office remotely such as lights, curtains screens etc.

LEAP Office Backend Management Platform

- Monitor visitors through cameras and sensors and grant them access to specific zones.
- Manage device status to ensure all devices are online and fully functioning
- Common area management – manage devices and create automations for more energy-efficient and comfortable common areas
- Check In/Out for all guests, giving them smart lock access through facial recognition, key code, or app

OUR SMART INSTALLATIONS & DEVICES



Multi Communication Mode Module



- Remote control through router without gateway.
- Low user threshold, simple operation.
- Various types of products can be interconnected.
- OTA upgrade flexibility.



- The system is mature, stable, and reliable.
- Gateway can realize local linkage.
- The number of connected devices is large, and the distance is far.
- It can be upgraded by OTA.



- Mobile direct connection and gateway connection are optional.
- It has the lowest cost and great advantage.
- It is suitable for independent small system without network.

SMART FACILITY HARDWARE

310,000+ Smart Device SKU's
220 Countries and regions
<10ms average cloud response time

Suggested Devices:

- Smart Lock
- Smart Gateway
- Smart Plug
- Smart Switch
- Smart Motion Detector
- Smart Thermostat
- Smart Meter Reader
- Occupancy Sensor
- Smart MCB





Door/Window Sensor



Motion Sensor



Temperature &
Humidity Sensor



Water Leak Sensor



Smoke Sensor



Control Panel



Smart Switch



Blaster Infrared
Remote Controller



Smart Meter



Smart Door Lock



Fall Detector



SOS Button



Outdoor Camera



Indoor Camera



Smart Socket



Vibration Sensor



Indoor Siren



Luminous Sensor



Multi Purpose Remote Control



Kinetic Switch



Multi Purpose Switch



Video Intercom



Anti-Lost Tracker



Floor Sweeping Robot



Smart Air Cooler



Smart Cooking Robot



Lightings & Other Appliances



Quantum Leap Incorporation Pte Ltd

 **+65 8752 1040**

 **enquiry@quantumleapinc.net**

114 Lavender Street #09-50

CT HUB 2, Lobby 3, Singapore 338729

PLATFORM FEATURES

Facility Management

Manage all rooms in the facility as well as the status of all included devices

Device Management

Centrally manage and control all devices within both the rooms and common areas

Access Control

Contactless Check-In as well as permissions control for all staff

Room Reservation System Binding

Bind LEAP Office to your chosen Room Reservation System to seamlessly manage your smart facility

Energy Analysis

Track and manage the energy output of all rooms and devices in the property

Maintenance Management

Enable staff to install devices and temporarily access the room using the maintenance app

Asset Management

Manage the number of room and device licenses you have available

Personnel Management

Give appropriate permissions to different staff members

Message Center

Stay informed with live updates from every area of your facility

